



Spam and Virus Filtering Software — get **precisely** the email you want

Eliminates spam, phishing and virus threats at the Internet gateway or mail server - 98% spam detection rate out-of-box without filtering legitimate messages



PreciseMail Anti-Spam Gateway is an enterprise solution that eliminates spam, phishing and virus threats at the Internet gateway or mail server. According to an independent third-party test, PreciseMail Anti-Spam Gateway has a 98% spam detection accuracy rate out-of-box without filtering legitimate messages. It works with any mail server and is easy to use with an intuitive web-based administrator and user interface.

HIGHLY ACCURATE WITH ZERO LOSS OF LEGITIMATE MESSAGES

PreciseMail Anti-Spam Gateway's highly sophisticated filtering engine is based on a combination of proven technologies, such as heuristic analysis, DNS blacklisting, reputation filtering, Bayesian artificial intelligence technologies, and more. As a result, PreciseMail Anti-Spam Gateway intelligently analyzes whether a message is spam instead of passively reacting to known spammers by creating rules that block them after a spam attack occurs. Process Software provides customers with timely automatic filter updates so that PreciseMail Anti-Spam Gateway's accuracy is sustained over time with no administration required.

GET PRECISELY THE EMAIL YOU WANT WITH USER-BASED CONTROLS:

Everyone's definition of spam is unique. PreciseMail Anti-Spam Gateway gives each user the option to determine what is spam and what is not spam, giving them precisely the email they want. Users can manage their spam messages via an intuitive web-based interface which requires no special training. Spam control options available to users include:

- Quarantining, tagging, or discarding spam messages
- Receiving email notification of new quarantined messages—including review and retrieval options

Advantages

- Receive an immediate return on investment
- Proactively eliminate spam, phishing and virus attacks
- Improve employee productivity
- Eliminate spam and viruses before they impact your organization's infrastructure
- Rapidly deploy with centralized web-based administration
- Never lose a legitimate message
- Customize to meet the needs of each user in any type of organization
- No special user training is required
- Offload spam from your mail servers
- Flexible deployment options for any mail environment
- Reliably manages email filtering on multiple MTAs
- Comprehensive graphical reporting

- Adjusting filter sensitivity
- Creating and modifying per-user allow and block lists
- Opting out of filtering

EASY CENTRALIZED WEB-BASED ADMINISTRATION:

PreciseMail Anti-Spam Gateway requires minimal administration to filter spam effectively. Only a few parameters need to be set to have the product up and running. The web-based administration interface centralizes all configuration and management tasks. PreciseMail Anti-Spam Gateway's default configuration is effective out-of-the-box, but also provides system administrators the ability to customize the product to their site's requirements. The web-based administration options include:

- Setting default filtering policies and message handling options for users or groups of users
- Generating graphical reports
- Tuning filter thresholds
- Modifying settings for all users or an individual user
- Enabling end user web features
- Selecting authentication methods and web server configuration
- Creating allow lists and block lists
- Writing content filters
- Controlling logging and debugging
- Editing configuration files

FLEXIBLE DEPLOYMENT

PreciseMail Anti-Spam Gateway is designed to integrate seamlessly with an organization's email server or gateway and may be deployed inside or outside a firewall.

- Runs on the same system as the mail server (see Figure 1) or a system placed in front of the mail server (see Figure 2).
- Supports various authentication methods so that an organization can choose what best fits their existing environment. The authentication options are LDAP, IMAP4, POP3, PreciseMail's user database, or local system password.
- Supports TLS using the SMTP proxy configuration so that an organization can continue to send and receive confidential email.

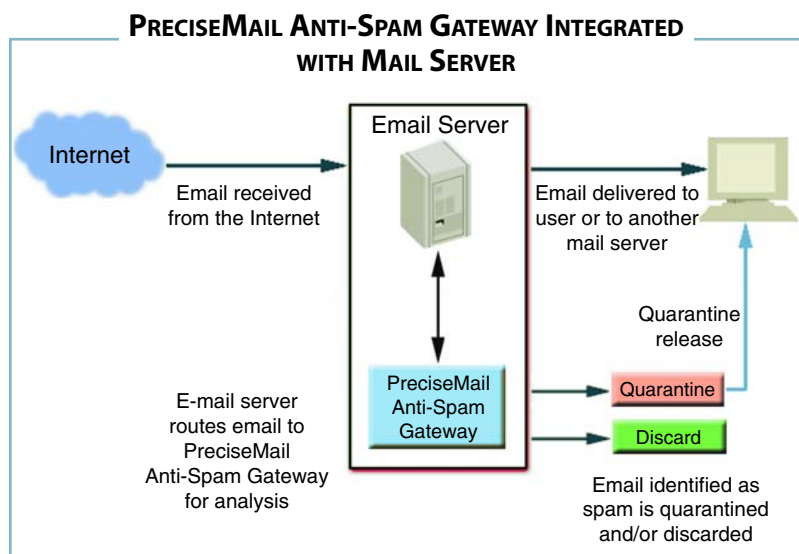


Figure 1

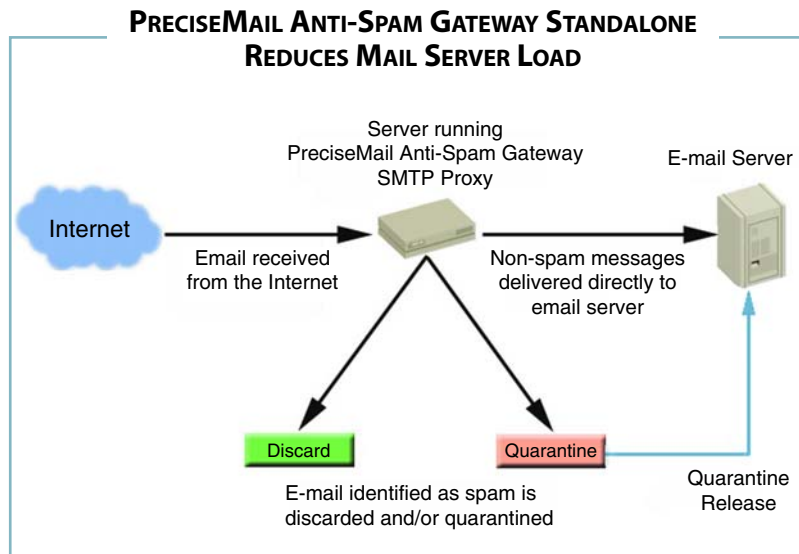


Figure 2

- Scales to meet the requirements of a large enterprise. The Advanced Infrastructure (AI) module provides a scalable backbone for organizations that have deployed multiple high traffic email systems. It allows organizations to easily manage filtering distributed among multiple MTAs. Sharing data among many systems simplifies both management and end-user access.
- Provides administrators with the option to set group policies filters to meet an organizations diverse requirements.

USER QUARANTINED EMAIL SUMMARY

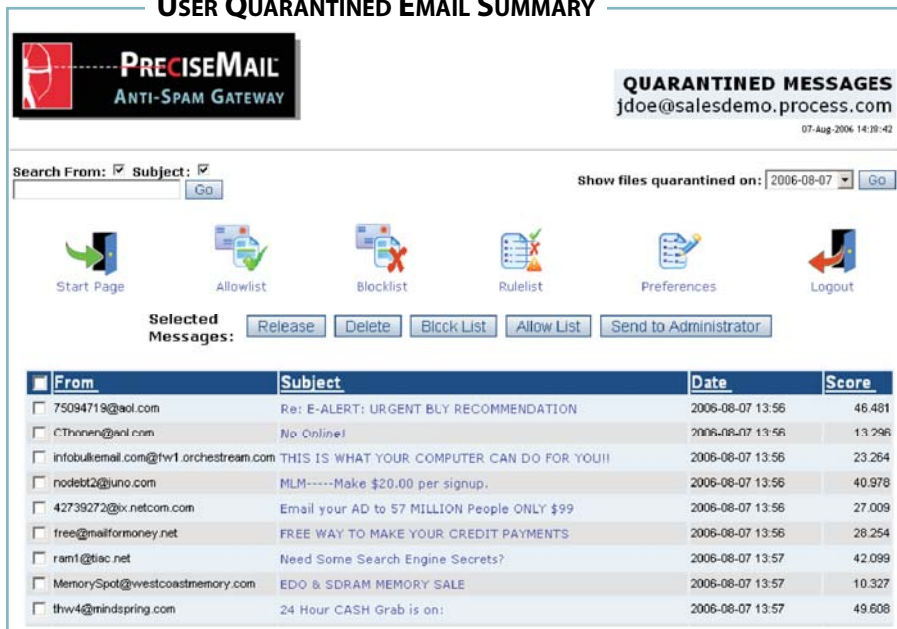


Figure 3

CUSTOMIZE TO MEET THE NEEDS OF ANY EMAIL ENVIRONMENT

PreciseMail Anti-Spam Gateway provides the highest degree of flexibility compared to other anti-spam solutions. Although it is an effective out-of-the-box solution, system administrators can adjust the Process Software supplied spam definitions by tuning the various weights applied to each rule, depending on how aggressively they want to filter spam. A combination of rules can trigger a positive score, which indicates that an email message is spam. The threshold of this overall score can also be adjusted. For example, the total score of the combined phrase “low interest rates” and “click below” would trigger a threshold set by a system administrator that indicates the message is spam. System administrators can customize PreciseMail Anti-Spam Gateway by adding their own rules to meet specific organizational requirements. Any of these customization options can be applied to all users or groups of users.

Once email has been identified as spam, a defined action can be taken depending upon the score of the message. The email can be quarantined, tagged, or discarded.

If users choose to quarantine suspected spam messages, they have access to their quarantined email at any time from their personal spam management web page (see Figure 3). Suspected spam is quarantined in realtime so that there is no delay in the message delivery.

If users choose to tag suspected spam messages, they are notified in the Subject line. Users can set rules

in their email clients, such as Outlook, Netscape, Eudora and others to place tagged messages in a special folder.

COMPREHENSIVE WEB-BASED REPORTING

Detailed graphical reports on filtered email trends provide useful information on the overall message environment. Statistics and trends that are reported include: number of messages processed, number of messages filtered, number of messages quarantined, number of allow and block lists, top domains sending spam, user actions, and more. These reports allow you to monitor the return on investment by seeing how much spam is filtered and no longer affecting your users or system and network resources. (see Figure 4).

PreciseMail Anti-Spam Gateway’s logging and reporting capabilities allow system administrators to quickly determine why an email message was classified as spam. This information is useful for determining if a rule or threshold should be modified.

VIRUS PROTECTION

Because viruses, spyware, worms, and Trojans pose a substantial threat to organizations, PreciseMail Anti-Spam Gateway includes bundled anti-virus options with industry-leading Sophos Anti-Virus software and Clam Anti-Virus. The integrated anti-spam and anti-virus solution offers complete email protection at the Internet gateway. It includes a unified centralized web interface and automatic virus definition updates for easy administration.

COMPREHENSIVE WEB-BASED REPORTING

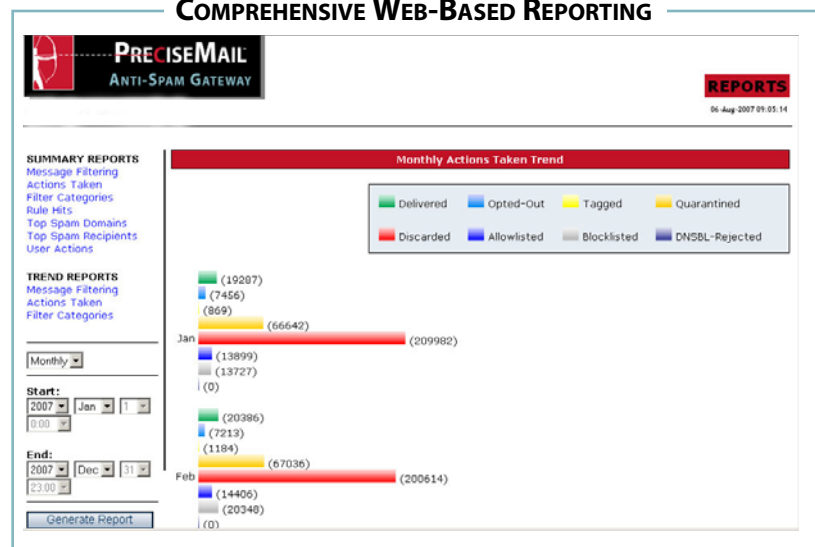


Figure 4

PROCESS SOFTWARE'S TECHNICAL SERVICES PROGRAM

Process Software's Technical Services Program has a well-deserved reputation for excellence. Services include consulting, training, software maintenance, online resources, and standard or 24-hour support.

REQUIREMENTS

1. Integrated Configuration:

- 128 MB RAM minimum (1 GB RAM or more recommended)
- 250 MB disk space minimum (1 GB or more recommended)

— plus one of the following:

- Sendmail 8.12 or higher on the following OS:
 - Solaris SPARC or Intel v8 or higher
 - RedHat Linux v7.2 or higher
 - RedHat Linux Enterprise Edition v3.0 or higher
 - Suse Linux v9.0 or higher
- Sun Java System Messaging Server (formerly known as Sun ONE Messaging Server) v5.2 or higher on Solaris SPARC 8 or higher
- PMDF v6.1 or higher on the following OS:
 - OpenVMS VAX v6.1 or higher
 - OpenVMS Alpha v6.2 or higher
 - OpenVMS Integrity v8.2 or higher (requires PMDF v6.3)
 - Solaris 8 or higher on SPARC/x86
 - Tru64 UNIX v4.0D or higher

2. Standalone SMTP Proxy Configuration:

- 128 MB RAM minimum (1 GB RAM or more recommended)
- 250 MB disk space minimum (1 GB or more recommended)
- Mail Server: Any
- Operating System: one of the following:
 - Solaris 8 or higher on SPARC/x86
 - RedHat Linux v7.2 or higher
 - RedHat Linux Enterprise Edition v3.0 or higher
 - Suse Linux v9.0 or higher
 - OpenVMS VAX v6.1 or higher
 - OpenVMS Alpha v6.2 or higher
 - OpenVMS Integrity v8.2 or higher

FREE EVALUATION SOFTWARE!

Please call 800-722-7770 or email sales@process.com to get your free evaluation copy of PreciseMail Anti-Spam Gateway.

ABOUT PROCESS SOFTWARE

Process Software is a premier supplier of communications software solutions to mission critical environments. With 20 years in business, we were early innovators of email software and anti-spam technology. Process Software has a proven track record of success with many Global 2000 and Fortune 1000 customers.

Process Software
959 Concord Street
Framingham, MA 01701

Telephone:
U.S./Canada (800)722-7770
International (508)879-6994

Fax: (508)879-0042

Web: www.process.com

Email: info@process.com